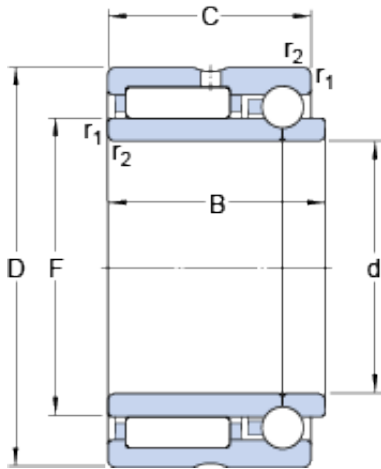




BEARING DRIVESHAFT, INC.



15 mm x 28 mm x 20 mm skf nkib 5902 bearing

Bearing No. nkib 5902

nkib 5902 Bearing 2D drawings and 3D CAD models

| | |
|---|-------------|
| Size | 28x15x20 mm |
| Bore Diameter | 28 mm |
| Outer Diameter | 15 mm |
| Width | 20 mm |
| d | 15 mm |
| D | 28 mm |
| B | 20 mm |
| C | 18 mm |
| F | 20 mm |
| r _{1,2} - min. | 0.3 mm |
| d _a - min. | 17 mm |
| D _a - max. | 26 mm |
| r _a - max. | 0.3 mm |
| Basic dynamic load rating, radial direction - C | 11.2 kN |
| Basic static load rating, radial direction - C ₀ | 15.3 kN |
| Basic dynamic load rating, axial direction - C | 2.3 kN |
| Basic static load rating, axial direction - C ₀ | 2.4 kN |
| Fatigue load limit, radial direction - P _u | 1.8 kN |
| Fatigue load limit, axial direction - P _u | 0.099 kN |
| Reference speed | 19000 r/min |
| Limiting speed | 22000 r/min |
| | |



BEARING DRIVESHAFT, INC.

| Category | Roller Bearings |
|--|---------------------------------------|
| Inventory | 0.0 |
| Manufacturer Name | SKF |
| Minimum Buy Quantity | N/A |
| Weight / Kilogram | 0.058 |
| EAN | 7316577015532 |
| Product Group | B04144 |
| bore diameter: | 15 mm |
| closure type: | Open |
| outside diameter: | 28 mm |
| fillet radius: | 0.3 mm |
| overall width: | 20 mm |
| lubrication type: | Grease |
| bearing type: | Needle Roller/Angular Contact Ball |
| cage material: | Steel |
| operating temperature range: | Max 250 ° F |
| series: | NKIB |
| radial dynamic load capacity: | 11.2 kN |
| manufacturer product page: | Click here |
| radial static load capacity: | 15.3 kN |
| manufacturer upc number: | 7316577015532 |
| bearing material: | Steel |
| weight: | 0.11 lb |
| maximum rpm: | 22000 rpm |
| r _{1,2} min. | 0.3 mm |
| d _a min. | 17 mm |
| D _a max. | 26 mm |
| r _a max. | 0.3 mm |
| Basic dynamic load rating, radial direction C | 11.2 kN |
| | |



BEARING DRIVESHAFT, INC.

| | |
|---|----------|
| Basic static load rating, radial direction C_0 | 15.3 kN |
| Basic dynamic load rating, axial direction C | 2.27 kN |
| Basic static load rating, axial direction C_0 | 2.37 kN |
| Fatigue load limit, radial direction P_u | 1.83 kN |
| Fatigue load limit, axial direction P_u | 0.099 kN |
| Mass bearing | 0.052 kg |